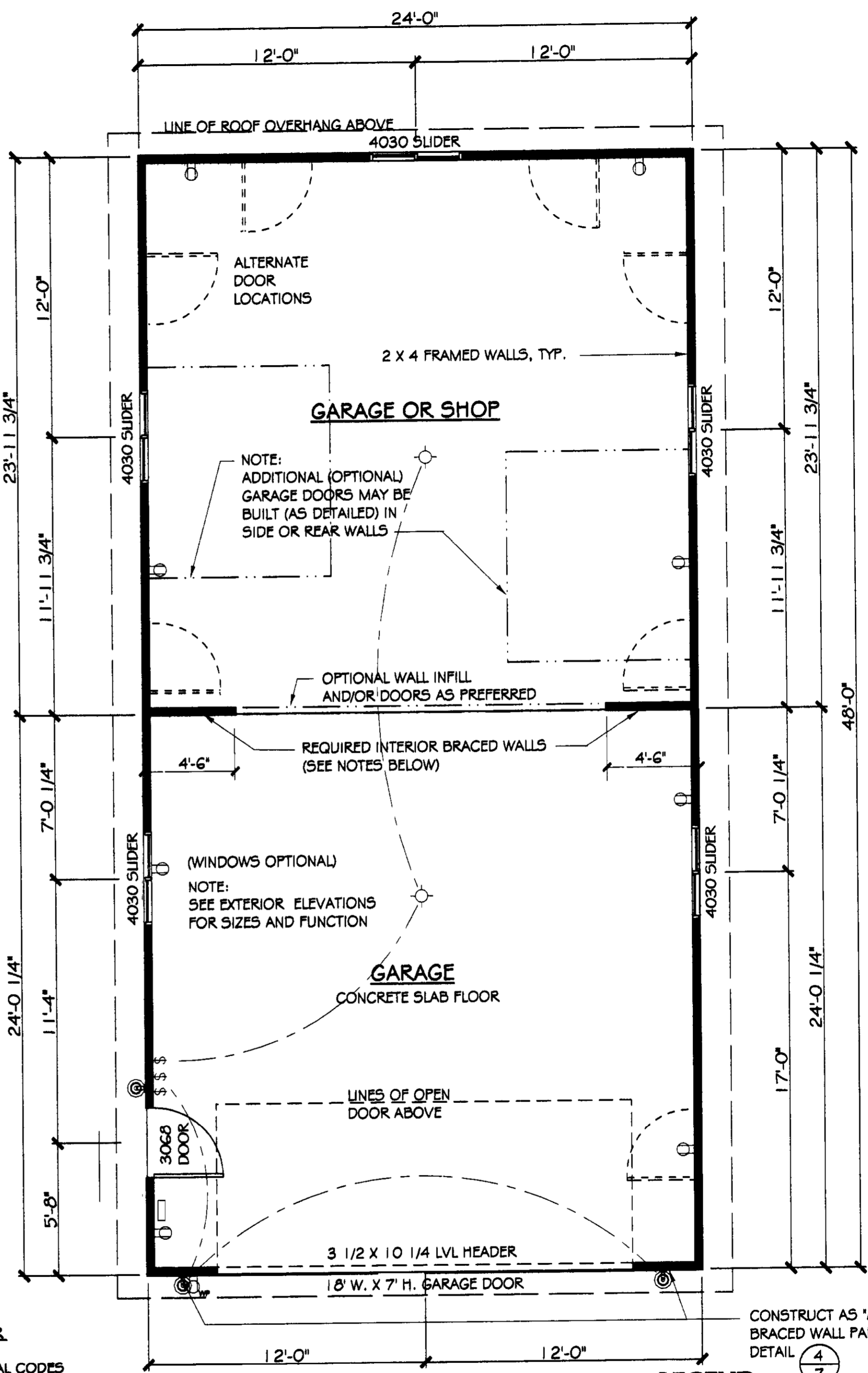


**FOUNDATION PLAN**

SCALE: 1/4" = 1'-0"

NOTE: FOUNDATION PLAN DIMENSIONS ARE TO FACE OF CONCRETE OR CENTERLINE OF BEARING, AS SHOWN



**FLOOR PLAN**

SCALE: 1/4" = 1'-0"

NOTE: FLOOR PLAN DIMENSIONS ARE TO FACE OF FRAMING OR CENTERLINE OF BEARING, TYP. AS SHOWN

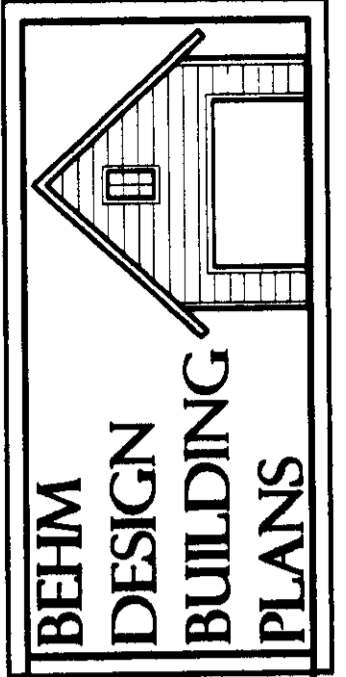
**BRACED WALLS AS PER IRC R602.10 APPLICABLE FOR LOCAL CODES**

EFFECTIVE BRACED WALLS PANELS - (SHOWN: - - - - -)  
 NAIL SIDING PANELS OR SHEATHING W/ 2d @ 6" o.c., EDGES AND @ 12" O.C., FIELD TO WALL FRAMING (MIN. 48" OR 3 STUD SPACES)

INTERIOR BRACED WALLS FRAMED W/ 2 X 4 STUDS @ 16" O.C. W/ DOUBLE TOP PLATE AND PRESSURE-TREATED BOTTOM PLATE. SHEATH WITH 7/16" O.S.B. AND NAIL W/ 8d @ 6" o.c., EDGES AND @ 12" O.C., FIELD - ATTACH TO FLOOR AND CEILING AS PER DETAILS

**LEGEND**

- Ⓢ SWITCH LOCATION
- ⊙ CEILING MOUNTED LIGHT FIXTURE
- ⊕ 110 VOLT DUPLEX OUTLET
- ⊗ EXTERIOR WALL-MTD. LIGHT FIXTURE
- ELECTRIC PANEL OR SUB-PANEL LOCATION, INSTALL PER LOCAL CODES



QUESTIONS? CALL  
 1-800-210-6776  
 WWW.BEHMDESIGN.COM

PLAN NO.  
**1152-3**

DESIGN BY:  
 DATE: 10/14/05

SHEET CONTENTS:  
 FLOOR PLAN  
 FOUNDATION PLAN

SHEET  
**2**  
 OF **6**

COPYRIGHT 2005 BEHM DESIGN